

Edge Racer



Edge rounding and deburring

Laser cut, punched and nibbled components

Double sided in a single run

Wöhler: Motivation through fascination

Isn't it fascinating, just how much is demanded of a machine today?
It must be resilient and durable, versatile and flexible.
Give full performance – at all times.

Based on our 75 years of tradition as machine constructors we approached the challenge of developing a machine specially for the deburring and edge rounding of metal plates and components parts, offering you a 100% solution.

Wöhler: Technology and know how

The Wöhler company name stands for:

- First class machines and systems
- Innovative, customised one-stop solutions
- Customer relationships built on partnership and respect

We are proud to think differently and so to find solutions that remain unobtainable to others...

Countless customers worldwide are already convinced by our fascination, quality and wealth of inventiveness
Made in Germany.

Welcome to the World of Wöhler!

About us...



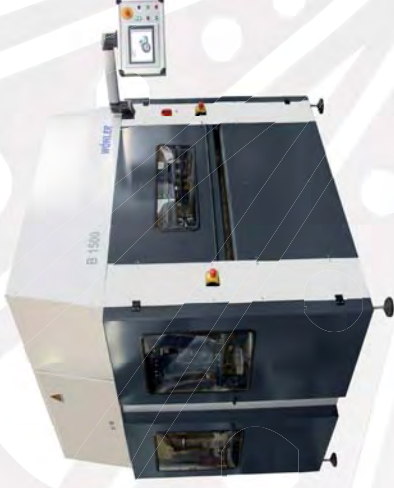
theWorldof
**Brushmaking
Machines**



Follow us into a new processing era...

Sharp edges are now a thing of the past! Innovation in perfection: The EdgeRacer

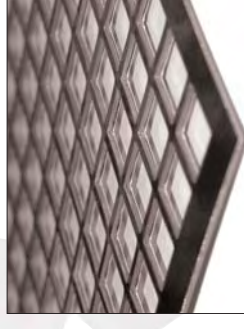
The modular, highly flexible EdgeRacer was specially designed to meet the specific requirements of metal processing in edge rounding and deburring.



Features that will convince you:

- Double sided deburring in a single run
- Simultaneous surface finishing
- Precision and defined edge rounding (inner and outer contours)
- Removal of oxide film
- Laser cut, punched and nibbled components
- Gentle to surfaces, even on polished, brushed and laminated plates
- Reproducible results
- High throughput rate (500 m²/h)
- Considerable reduction of processing costs
- Brush setting beneath roller table level possible

Edge rounding and deburring



Facts... all about technology

Technical data

Operative width:	1,000 / 1,500 / 2,000 mm
Processing performance:	350 / 500 / 700 m ² /h
Height adjustment:	up to 100 mm
Component length:	min. 320 mm, shorter on pallets
Component thickness:	up to 40 mm
Rounding degree:	adjustable
Insert height:	880 mm + 100 mm
Area required:	3,300 x 2,600 x 2,500 mm
Weight:	approx. 4,000 kg
Electrical connection:	3 x 400 V, 50 Hz, 25 kVA, 12 kW (without extraction system)
Extraction output required:	min. 5,000 cbm/h
Sound level:	<= 65 db

Processing:

The EdgeRacer is specially designed for the even edge rounding and deburring of inner and outer contours of metal plates and smooth component parts.

The parts to be processed are laid on the transport roller table and fed into the machine.

Both sides are processed simultaneously in a single run, so that on completion the parts can be directly conveyed to the following production step.

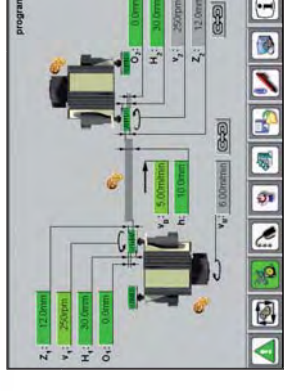
Engineering precision...

- Quick and precise height adjustment
- Infinitely variable material thickness up to 100 mm
- Format change within seconds



Quick and easy with touch screen

- Easy, graphical operation
- Large program memory
- Automatic service display



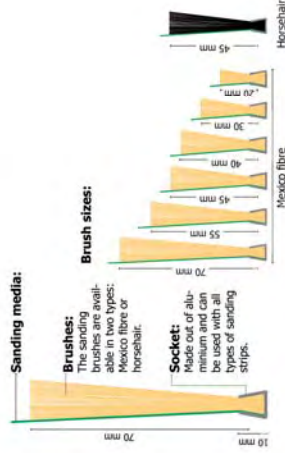
Always ready... rapid change

- Click system for quick brush changing
- High operational availability



Brushes for every application...

- Flexible, high-tech ceramic strips
- Long service life
- User defined cuts and lengths



Sanding materials	Cuts
Ceramic	3 mm
	4.5 mm
	6.7 mm
	20 mm
	No cuts
Grain sizes	
60 • 80 • 100 • 120 • 150 • 180 • 220 • 240 • 280 • 320 • 400 • 600 • 1000	

Smooth running... the material transport

- Material transport by rubberised rollers
- Precision plate guiding
- Infinite adjustment range



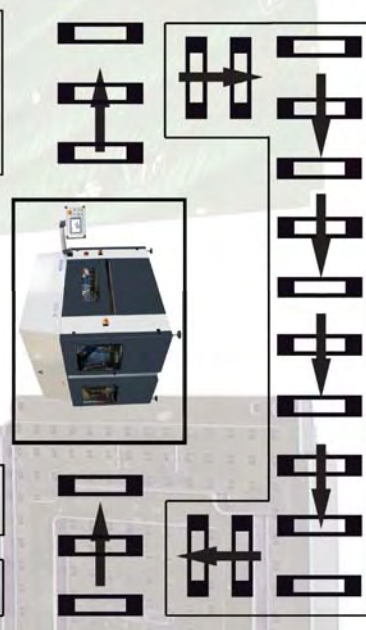
Prepared for the future... system modules

Washing and drying

Wide belt grinder

Waste extraction

Plate stacking system



Transport roller table